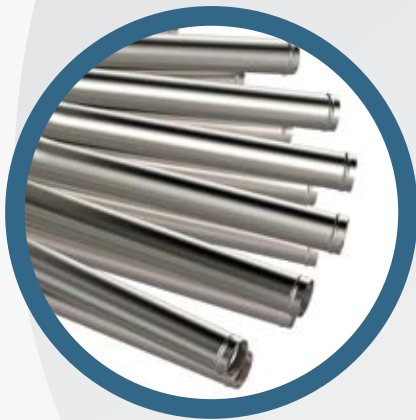
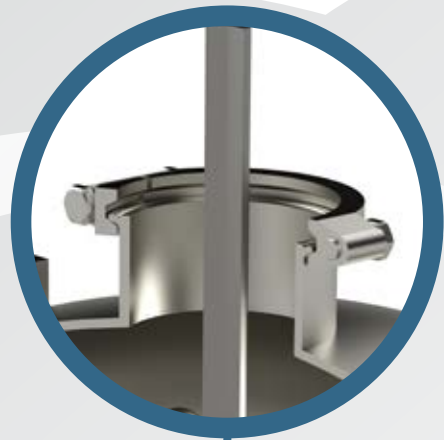




STANDARD MANIFOLD



Better Bottling
THE FBN WAY

The most sanitary and versatile liquid delivery system in the industry

One Piece Handle

- Handle is smaller than ID hole for easy removal

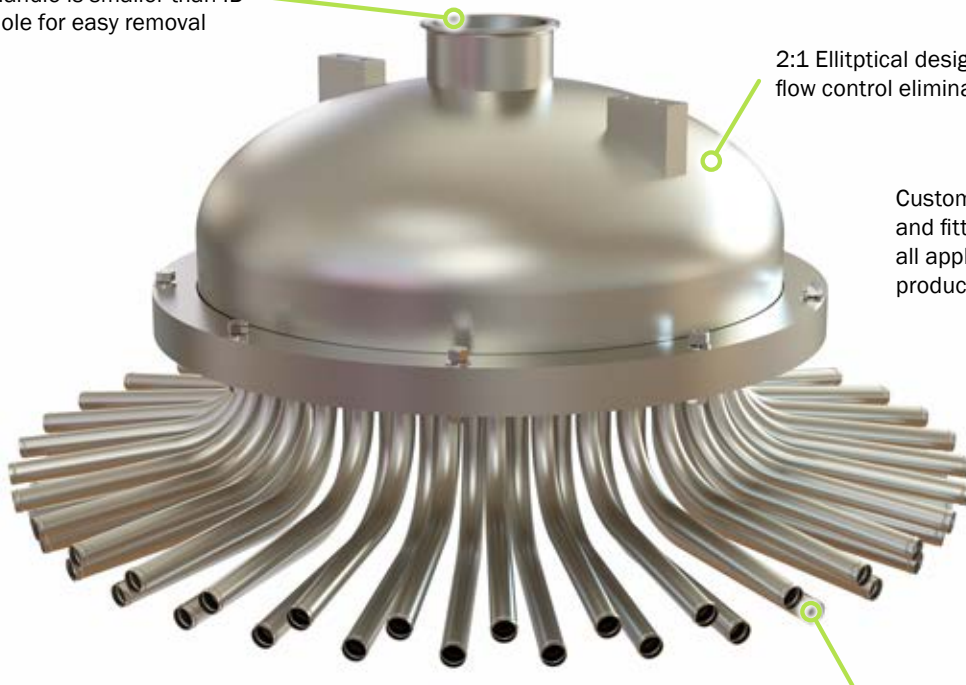
316SSL Stainless Steel Design

2:1 Elliptical design for maximum flow control eliminating foaming

316 Polished Stainless Shut-off Plate

- Sanitary Knurled Pin Design to fasten plate to shoe with zero fasteners
- Sanitary gap between plate and shoe for CIP access

Custom tube diameters and fittings available for all applications and products



High Temp UHMW Shut-off Shoe

- Non hydroscopic for greater stability
- Both fixed and adjustable shoe designs available to limit overflow rates and superior fill height control

Adjustable Center Support

316SSL Stainless Tubing

- Custom tube bending and orientation for optimal package and flow rate range

But Wait—There's More to Love About FBN!

CUSTOM SUPPORT AND SERVICE

From filling systems to line audits and bottling solutions, FBN offers services to keep your line running its best.



EXPERIENCE THE DIFFERENCE, [CLICK HERE TO CONTACT US TODAY.](#)



Bottling Equipment, Sales, and Service

928 Industrial Parkway, Plainwell, MI 49080 • T+269.685.0100 • F+269.685.1200 • fbnsalesinc.com

Better Bottling
THE FBN WAY