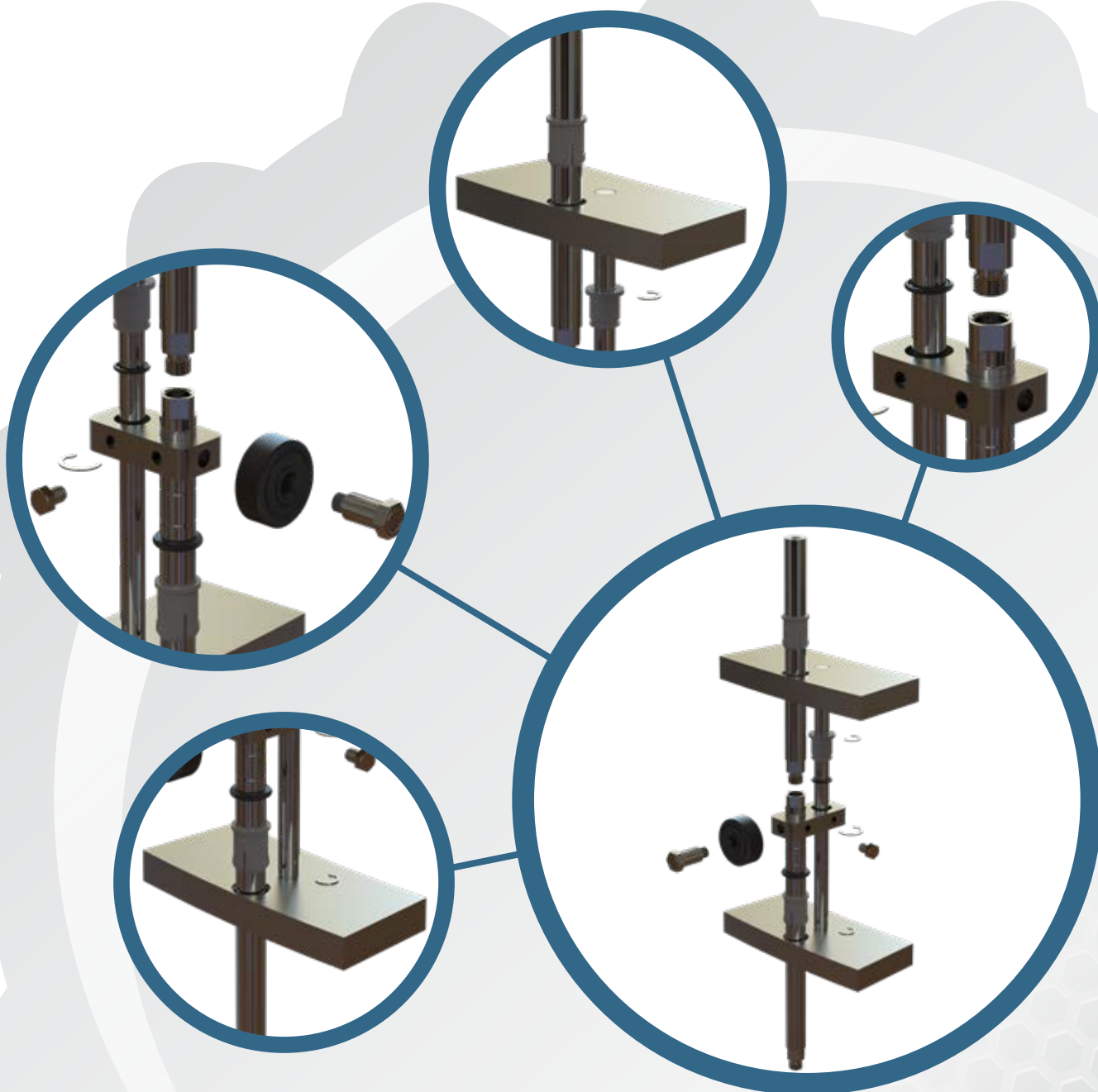




TWO-PIECE SLIDE ROD ASSEMBLY



Better Bottling
THE FBN WAY

Our two-piece slide rod assembly is built better and delivered faster for less!

Proprietary Snap-In Bushing

- Engineered polymer material.
- Simple, yet robust snap-in design.

Cam Bolt and Roller

- Bushing and bearing free design. CNC machined with tight tolerances for precision fit.
- Shoulder bolt.

Threaded and Quick Release Options Available

Support Rod

- Ground and polished to $\pm .0005$ tolerance.
- Machined from solid bar stock.

Cam Block

- 100% CNC machined from solid stock.
- Reversible for clockwise or counterclockwise rotation.

Two-Piece Slide Rod

- Multiple snap ring grooves for simple height adjustment.
- Innovative design reduces maintenance time to deliver longer life to carousel rings.
- CNC machined from solid bar stock.

But Wait—There's More to Love About FBN!

CUSTOM SUPPORT AND SERVICE

From filling systems to line audits and bottling solutions, FBN offers services to keep your line running its best.



EXPERIENCE THE DIFFERENCE, CONTACT US TODAY.



Bottling Equipment, Sales, and Service

928 Industrial Parkway, Plainwell, MI 49080 • T+269.685.0100 • F+269.685.1200 • fbnsalesinc.com

Better Bottling
THE FBN WAY